

- NOTES**
- ALL DIMENSIONS ARE IN MILLIMETRES UNLESS NOTED OTHERWISE.
 - ALL LEVELS ARE IN METRES RELATIVE TO ORDNANCE DATUM NEWLYN UNLESS NOTED OTHERWISE.
 - ALL CO-ORDINATES IN METRES RELATIVE TO ORDNANCE SURVEY NATIONAL GRID.
 - BEACH LEVELS VARY.
 - DATE OF SURVEY JUNE 2012.
 - FLOOD DEFENCE REQUIREMENT MUST BE MAINTAINED AT ALL TIMES WITH REFERENCE TO SPECIFICATION.
 - APPROX. SIZES OF ROCK. FULL DETAILS GIVEN IN THE SPECIFICATION
- TYPE 0 = 8t
 TYPE 1 = 3-6t
 TYPE 2 = 1-3t
 TYPE 3 = 300-1000kg

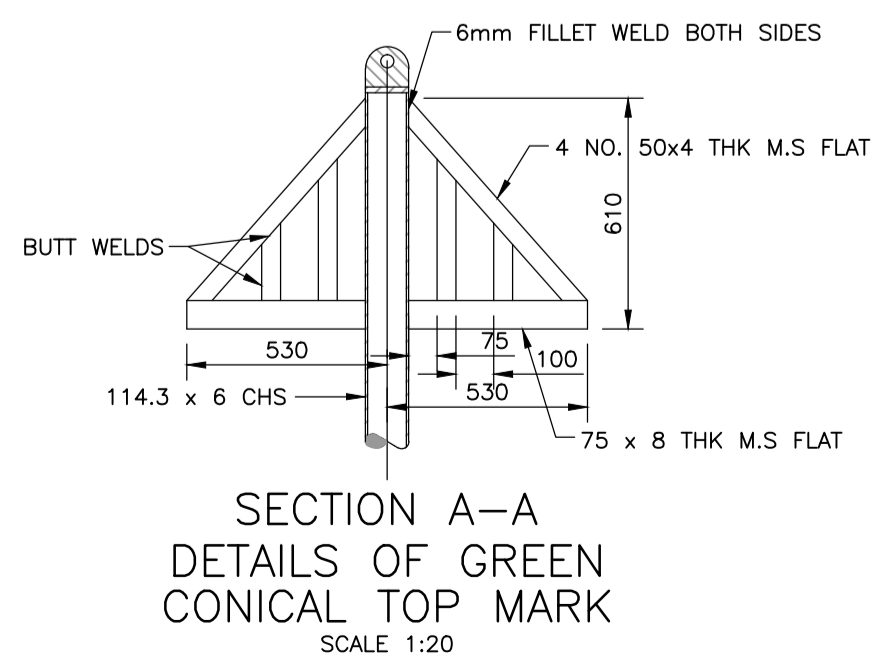
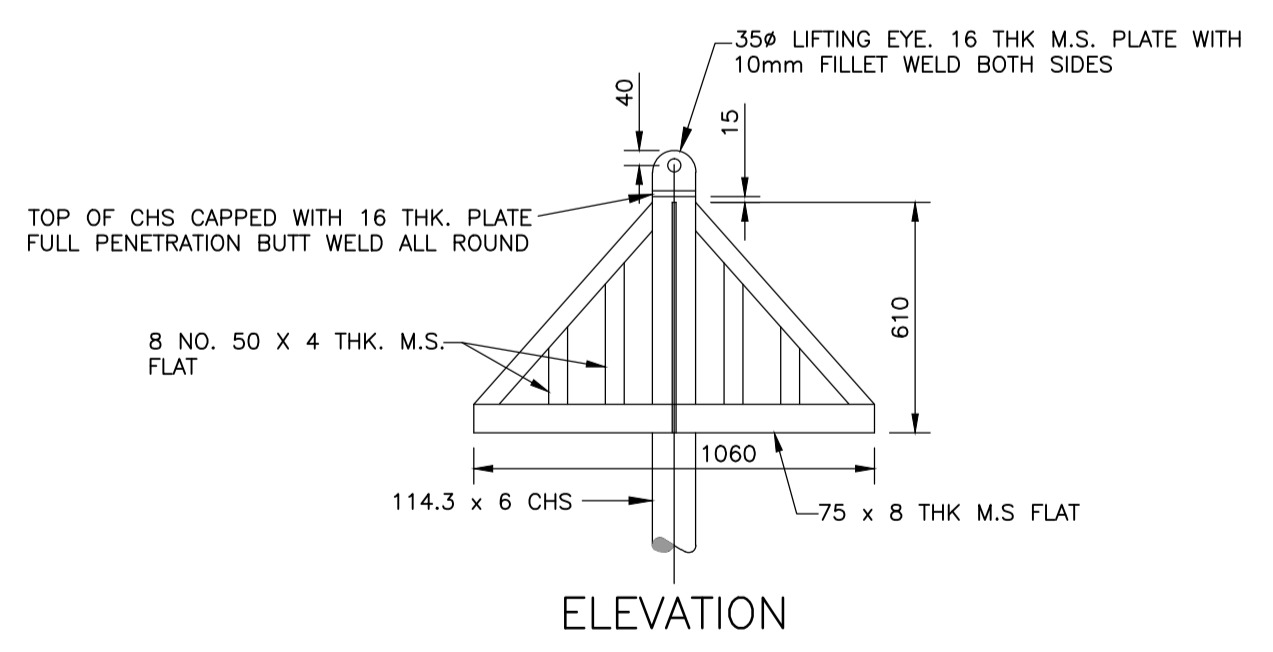
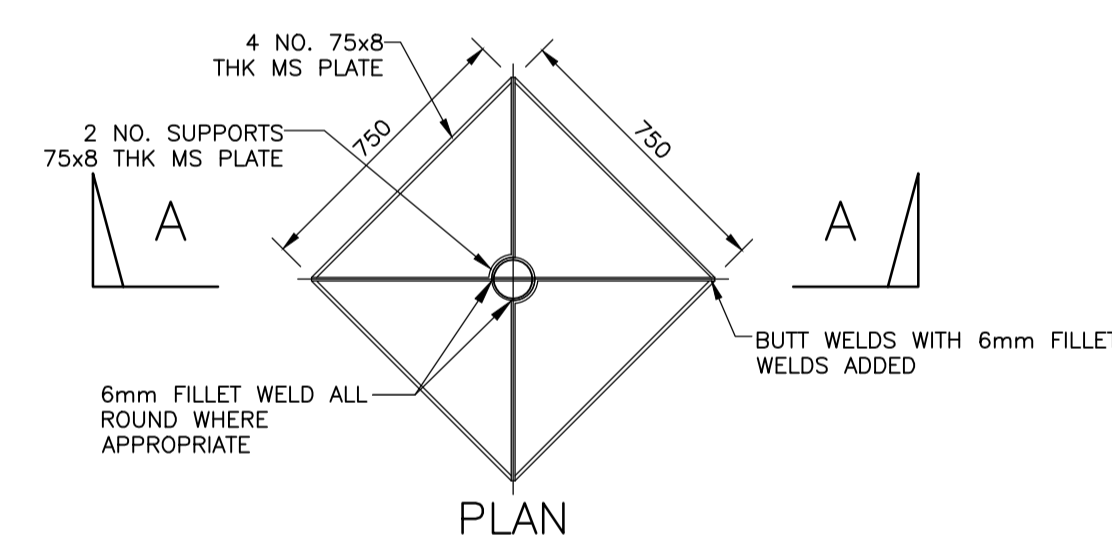
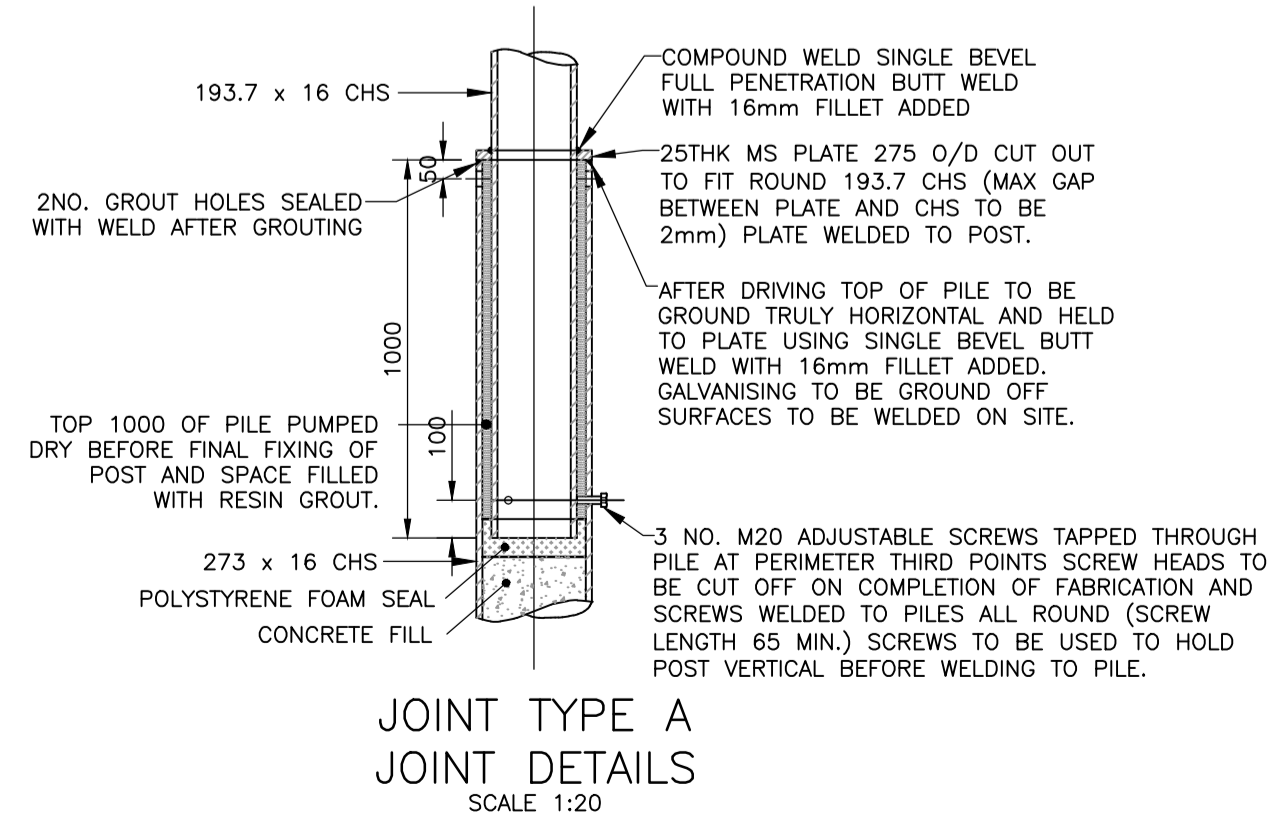
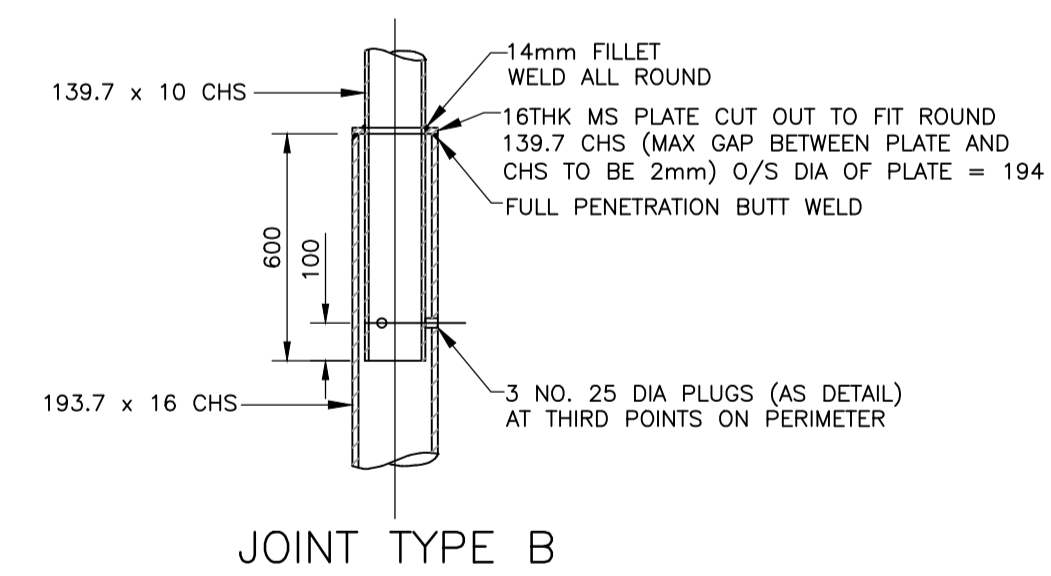
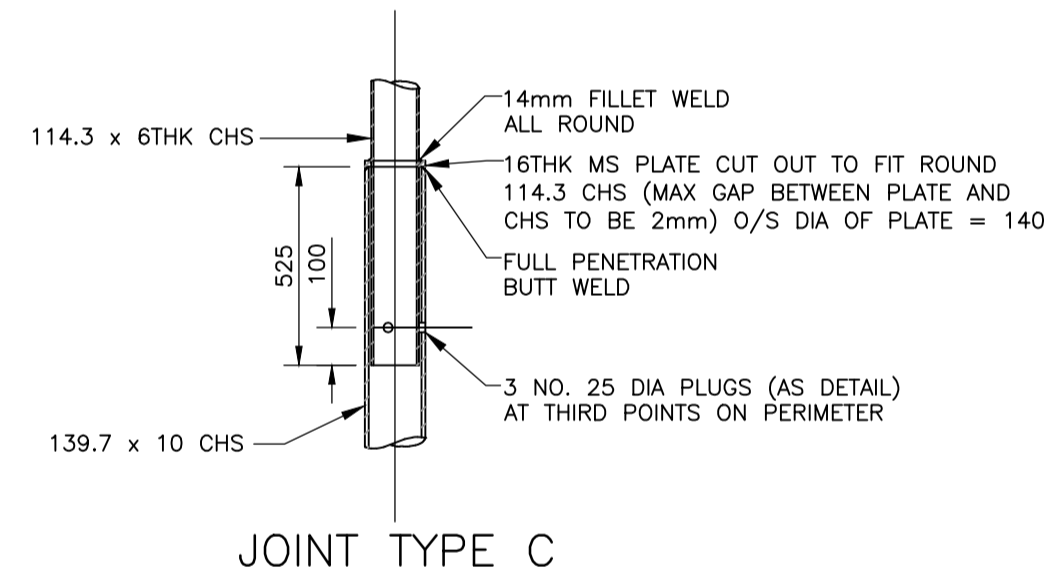
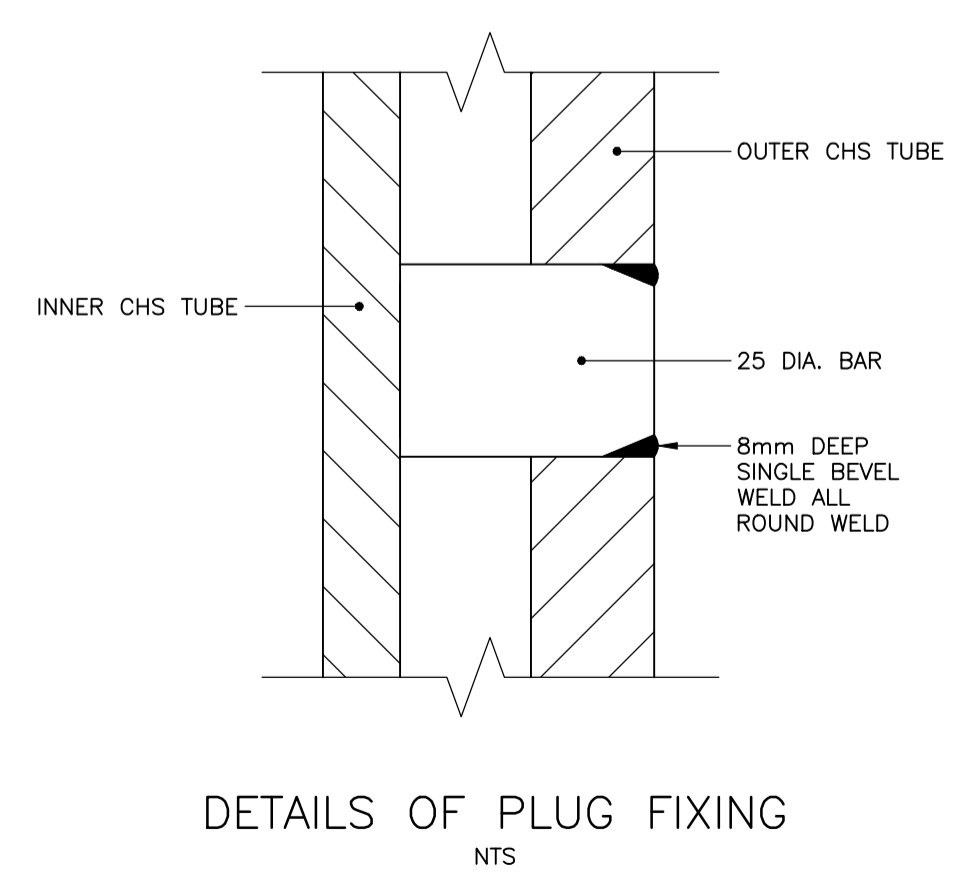


TABLE 1

SETTING OUT INFORMATION

SOP	EASTINGS	NORTHINGS	DRIVEN LEVEL (mODN)*
M08	260704.955	290110.853	-8.000
M09	260700.938	290176.642	-8.000
M10	260690.755	290360.273	-8.000
M11	260686.738	290426.063	-8.000
M12	260704.281	290550.449	-8.000
M13	260685.053	290659.074	-8.000
M14	260681.036	290724.863	-8.000
M15	260724.344	290839.161	-8.000
M16	260714.308	290876.182	-8.000

* TO BE CONFIRMED ON SITE



GROYNE MARKER DETAIL (SIMILAR TO EXISTING PHASE 1 MARKERS)

SCALE 1:25

FOR PLANNING

REV	DATE	DESCRIPTION	BY	CHK	APP
P1	MAR 13	FOR PLANNING	DLJ	EM	MJN



PROJECT

BORTH COASTAL PROTECTION SCHEME - PHASE 2

TITLE

GROYNE MARKER DETAILS AND FABRICATION



DRAWN	DLJ	CHECKED	EM	APPROVED	MJN
DATE	FEB 13	SCALE	AT A1 AS SHOWN	CLIENTS REF	9X4832/9003

DRAWING No.	9X4832/9003	REVISION	P1
-------------	-------------	----------	----